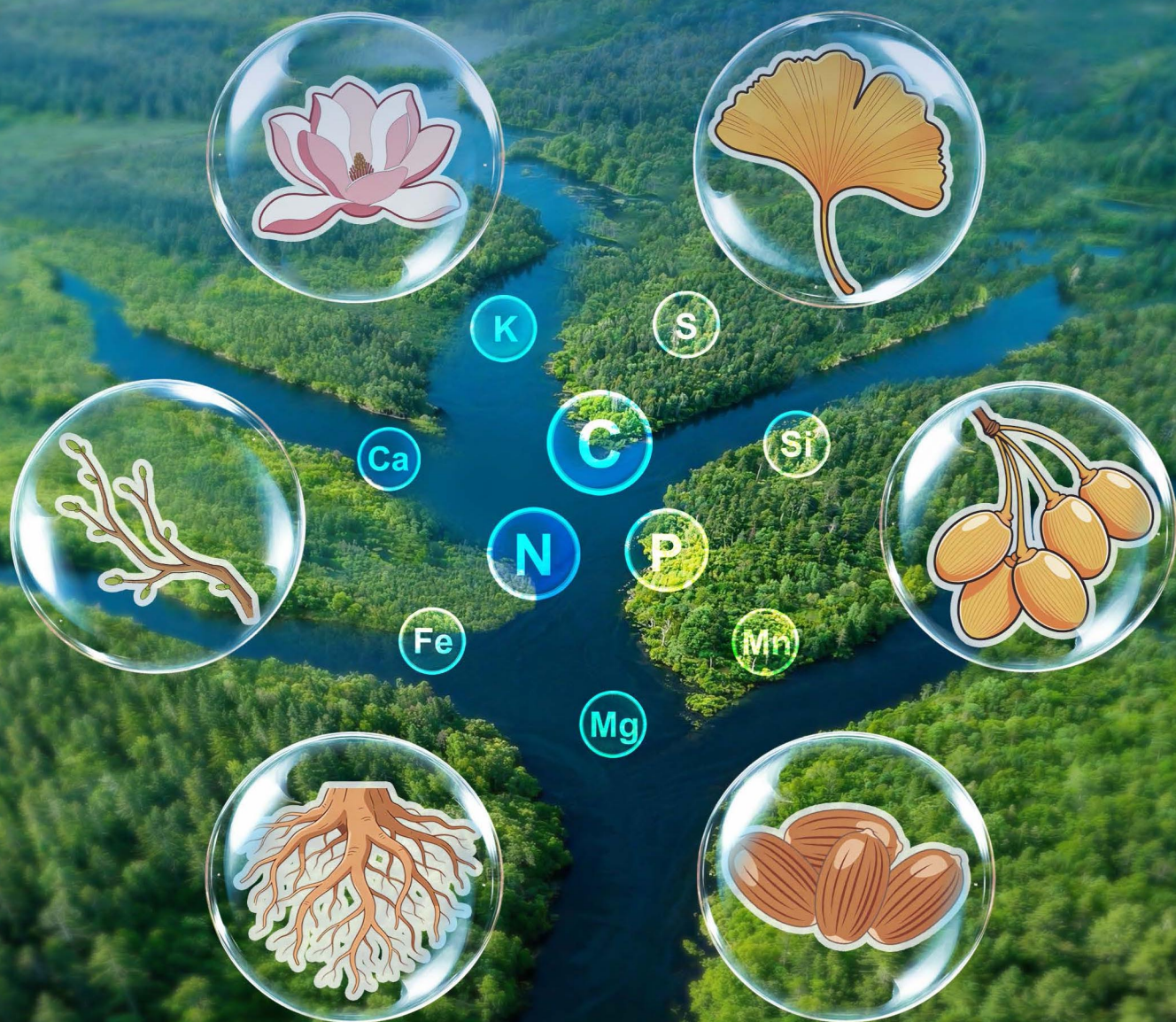


植物生态学报

Chinese Journal of Plant Ecology

2026年2月 第50卷 第2期 2026 Vol.50 No.2



专辑: 植物生态化学计量特征与功能性状
Plant Stoichiometric Characteristics and
Functional Traits



植物生态学报

Zhiwu Shengtai Xuebao

2026年2月 第50卷 第2期

植物生态化学计量特征与功能性状专辑

目次

编者评述

237 植物生态化学计量特征与功能性状
田地 贺鹏程 何念鹏

研究论文

244 长期氮添加对北方森林林下植物功能性状的影响
汪子轩 邢爱军 陈子歆 沈海花 方精云

256 氮磷添加对常绿阔叶林幼树叶片植食损伤的影响及调控机制
叶学敏 高伟 唐星林 陈伏生 孙荣喜 罗坤水

268 臭氧胁迫下叶片与细根凋落物分解的生态化学计量特征差异
侯霄帆 马辰涵 孙语倩 高钰涵 李品

279 生长季不同阶段和枝龄对常绿针叶树种枝性状的影响
郝雅昕 金光泽 刘志理

293 毛榛“小枝系统”生长与防御策略的季节动态和器官差异
李新貌 金光泽 刘志理

306 器官年龄在油松叶、枝、根化学计量特征变异以及协调中的重要作用
于江珊 许浩 郭永忠 侯继华

318 华北不同林龄人工林植物功能性状与碳氮化学计量
陈雅轩 韩雨音 陈艳梅 刘倩愿

334 亚热带森林不同菌根真菌树种叶片和细根的碳氮磷化学计量特征
王梦雪 胡明艳 储诚进 陈阳 罗文启 马子龙

344 不同生活型植物叶片氮重吸收效率的差异
王蓉钧 吴福忠 吴秋霞 朱晶晶 倪祥银

352 生境因子和系统发育协同驱动云南金沙江干热河谷植物叶片化学计量特征

冯哲 许格希 刘顺 陈健 李非凡 巩闪闪
贾磊 孙镇 余美霓 史作民 周庆宏 蒋冬梅

362 塞罕坝地区优势造林树种叶片化学计量特征及其环境驱动
田地 迟小龙 石亮 刘宵含 赵常提 吴梅 张玉忠 高永亮

374 太行山典型区不同生境酸枣根系资源获取策略
王爽 陈雅轩 陈艳梅 王佳乐 刘倩愿

388 基于叶片功能性状多维特征的北京平原林生态优化策略解析
谭聪 石亮 赵常提 甘沛钦 陈冰瑞 谭深 卜燕华 田地

400 南亚热带针阔混交人工林植物生物量比较及其影响因素分析
张静 陈洁 李艳朋 盘李军 许涵 李意德 何海生

417 氮添加和增温对天山高寒草地群落性状的影响
张永军 李敬东 安琦 洪翎桂 任正炜 张蕊 周小龙

429 不同水平氮添加下晋北赖草叶片化学计量特征及其对光合的影响
贾会丽 王睿 常玉良 林茂 栗国梁 武帅楷 苏原 董宽虎 **王常慧**

442 三峡回水扰动增强入库小流域河岸带典型草本植物功能性状的局域分化
戴丽君 向玲艺 蹇陈 王晓锋

461 不同纬度滨海湿地植物根系与土壤生态化学计量特征及内稳性分析
张竞文 李晶 王汝苗 王贺年 崔丽娟

474 华南国家植物园24种植物花与叶片功能性状变异
李沁 贺鹏程 叶清

封面说明: 植物不同器官生态化学计量特征与功能性状示意图。化学元素是构成生命的基础, 植物生态化学计量特征与功能性状是解析植物适应策略、群落构建及生态系统养分循环的关键。本专辑以“植物生态化学计量特征与功能性状”为主题, 汇集了我国学者在森林、灌丛、草地、荒漠等典型生态系统中的最新研究成果, 从叶、花、枝、干、根等不同器官, 系统揭示了碳、氮、磷等关键元素及植物功能性状的变异与形成机制, 及其对全球变化因子的响应规律。

专辑责编: 田地 贺鹏程 何念鹏

Chinese Journal of Plant Ecology

February 2026 Vol. 50 No. 2

Special issue: Plant Stoichiometric Characteristics and Functional Traits

CONTENTS

Editorial

- 237 Plant stoichiometric characteristics and functional traits
TIAN Di, HE Peng-Cheng, and HE Nian-Peng
- #### Research Articles
- 244 Effects of long-term nitrogen addition on understory plant functional traits in a boreal forest
WANG Zi-Xuan, XING Ai-Jun, CHEN Zi-Xin, SHEN Hai-Hua, and FANG Jing-Yun
- 256 Effects of nitrogen and phosphorus additions on leaf herbivory damage and its underlying mechanisms in saplings in an evergreen broad-leaved forest
YE Xue-Min, GAO Wei, TANG Xing-Lin, CHEN Fu-Sheng, SUN Rong-Xi, and LUO Kun-Shui
- 268 Differential ecological stoichiometry of leaf and fine root litter decomposition under ozone stress
HOU Xiao-Fan, MA Chen-Han, SUN Yu-Qian, GAO Yu-Han, and LI Pin
- 279 Effects of different stages of growing season and twig ages on twig traits in evergreen conifers
HAO Ya-Xin, JIN Guang-Ze, and LIU Zhi-Li
- 293 Seasonal dynamics and organ differences in growth and defense strategies of “twig system” of *Corylus mandshurica*
LI Xin-Mao, JIN Guang-Ze, and LIU Zhi-Li
- 306 Important role of organ age in variation and coordination of stoichiometry in *Pinus tabulaeformis* leaves, twigs and roots
YU Jiang-Shan, XU Hao, GUO Yong-Zhong, and HOU Ji-Hua
- 318 Plant functional traits and carbon-nitrogen stoichiometry of plantations at different forest ages in North China
CHEN Ya-Xuan, HAN Yu-Yin, CHEN Yan-Mei, and LIU Qian-Yuan
- 334 C, N, P stoichiometric characteristics of leaves and fine roots in different mycorrhizal tree species in subtropical forests
WANG Meng-Xue, HU Ming-Yan, CHU Cheng-Jin, CHEN Yang, LUO Wen-Qi, and MA Zi-Long
- 344 Differences in leaf nitrogen reabsorption efficiency among plants with different life forms
WANG Rong-Jun, WU Fu-Zhong, WU Qiu-Xia, ZHU Jing-Jing, and NI Xiang-Yin
- 352 Habitat factors and phylogeny jointly drive leaf stoichiometry in dry-hot valley region of Jinsha River, Yunnan, China
FENG Zhe, XU Ge-Xi, LIU Shun, CHEN Jian, LI Fei-Fan, GONG Shan-Shan, JIA Lei, SUN Zhen, YU Mei-Ni, SHI Zuo-Min, ZHOU Qing-Hong, and JIANG Dong-Mei
- 362 Stoichiometric characteristics of dominant afforestation tree species and their environmental drivers in Saihanba region
TIAN Di, CHI Xiao-Long, SHI Liang, LIU Xiao-Han, ZHAO Chang-Ti, WU Mei, ZHANG Yu-Zhong, and GAO Yong-Liang
- 374 Root resource-acquisition strategies of *Ziziphus jujuba* in different habitats in typical areas of Taihang Mountains
WANG Shuang, CHEN Ya-Xuan, CHEN Yan-Mei, WANG Jia-Le, and LIU Qian-Yuan
- 388 Analysis of ecological optimization strategies for Beijing plain forests based on multidimensional characteristics of leaf functional traits
TAN Cong, SHI Liang, ZHAO Chang-Ti, GAN Pei-Qin, CHEN Bing-Rui, TAN Shen, BU Yan-Hua, and TIAN Di
- 400 Comparison of plant biomass in conifer and broadleaf mixed artificial forests in south subtropical area and analyses of influential factors
ZHANG Jing, CHEN Jie, LI Yan-Peng, PAN Li-Jun, XU Han, LI Yi-De, and HE Hai-Sheng
- 417 Effects of nitrogen addition and warming on community traits in an alpine grassland community of Tianshan Mountains
ZHANG Yong-Jun, LI Jing-Dong, AN Qi, HONG Ling-Gui, REN Zheng-Wei, ZHANG Rui, and ZHOU Xiao-Long
- 429 Stoichiometric characteristics of *Leymus secalinus* under different levels of nitrogen addition and its effects on photosynthesis
JIA Hui-Li, WANG Rui, CHANG Yu-Liang, LIN Mao, LI Guo-Liang, WU Shuai-Kai, SU Yuan, DONG Kuan-Hu, and WANG Chang-Hu
- 442 Intensified local differentiation in plant functional traits among typical herbaceous plants by backwater disturbance within riparian zone of small watersheds in the Three Gorges Reservoir area
DAI Li-Jun, XIANG Ling-Yi, JIAN Chen, and WANG Xiao-Feng
- 461 Ecological stoichiometry characteristics and homeostasis analysis of plant roots and soil in coastal wetlands at different latitudes
ZHANG Jing-Wen, LI Jing, WANG Ru-Miao, WANG He-Nian, and CUI Li-Juan
- 474 Variation in flower and leaf functional traits of 24 species in South China National Botanical Garden
LI Qin, HE Peng-Cheng, and YE Qing

Cover illustration: Schematic diagram of ecological stoichiometric characteristics and functional traits in different plant organs. Chemical elements are the fundamental building blocks of life. Plant ecological stoichiometric characteristics and functional traits are the key to deciphering plant adaptation strategies, community assembly, and ecosystem nutrient cycling. This special issue, entitled “Plant Stoichiometric Characteristics and Functional Traits”, brings together the latest research findings from Chinese scholars in typical ecosystems such as forests, shrublands, grasslands, and deserts. It systematically reveals the variation and formation mechanisms of key elements (e.g., carbon, nitrogen, and phosphorus) and plant functional traits across different organs (leaves, flowers, branches, stems, and roots), as well as their response patterns to global change factors.

Editor of the special issue: TIAN Di, HE Peng-Cheng, HE Nian-Peng