

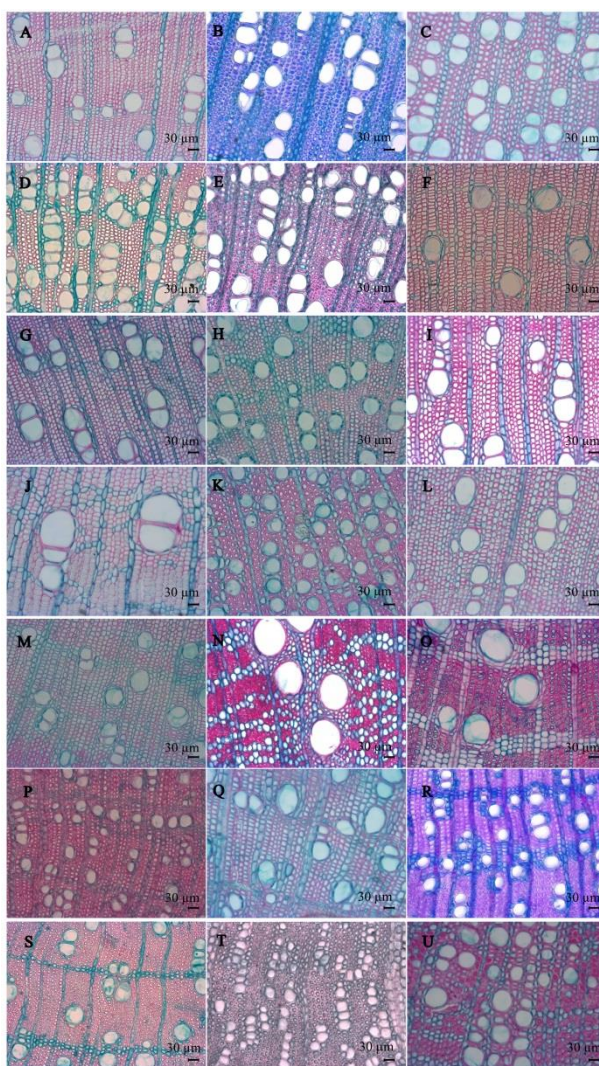
倪鸣源, Aritsara ANA, 王永强, 黄冬柳, 项伟, 万春燕, 朱师丹 (2021). 中亚热带喀斯特常绿落叶阔叶混交林典型树种的木质部解剖与功能特征分析. 植物生态学报, 45, 394-403. DOI: 10.17521/cjpe.2020.0367

Ni MY, Aritsara ANA, Wang YQ, Huang DL, Xiang W, Wan CY, Zhu SD (2021). An analysis of xylem anatomy and function of representative tree species in a mixed evergreen and deciduous broad-leaved forest of mid-subtropical karst region. *Chinese Journal of Plant Ecology*, 45, 394-403. DOI: 10.17521/cjpe.2020.0367

<https://www.plant-ecology.com/CN/10.17521/cjpe.2020.0367>

附录 II 广西木论 21 种喀斯特树种的木质部染色切片图

Supplement II Xylem anatomical structure the 21 karst woody species in Mulun, Guangxi



A, 黄梨木。B, 禾串树。C, 大叶紫珠。D, 麻楝。E, 灰毛浆果楝。F, 毛果巴豆。G, 伞花木。H, 青檀。I, 菜豆树。J, 圆叶乌柏。K, 假鱼骨木。L, 灰岩棒柄花。M, 岩生厚壳桂。N, 青冈。O, 大叶水榕。P, 山小橘。Q, 黑木姜子。R, 小芸木。S, 千里香。T, 广西密花树。U, 铁榄。

A, *Boniodendron minus*. B, *Bridelia balansae*. C, *Callicarpa macrophylla*. D, *Chukrasia tabularis*. E, *Cipadessa baccifera*. F, *Croton lachnocarpus*. G, *Eurycorymbus cavaleriei*. H, *Pteroceltis tatarinowii*. I, *Radermachera sinica*. J, *Triadica rotundifolia*. K, *Psyrax dicocca*. L, *Cleidion bracteosum*. M, *Cryptocarya calcicole*. N, *Cyclobalanopsis glauca*. O, *Ficus glaberrima*. P, *Glycosmis pentaphylla*. Q, *Litsea salicifolia*. R, *Micromelum integerrimum*. S, *Murraya paniculate*. T, *Myrsine kwangsiensis*. U, *Sinosideroxylon pedunculatum*.