

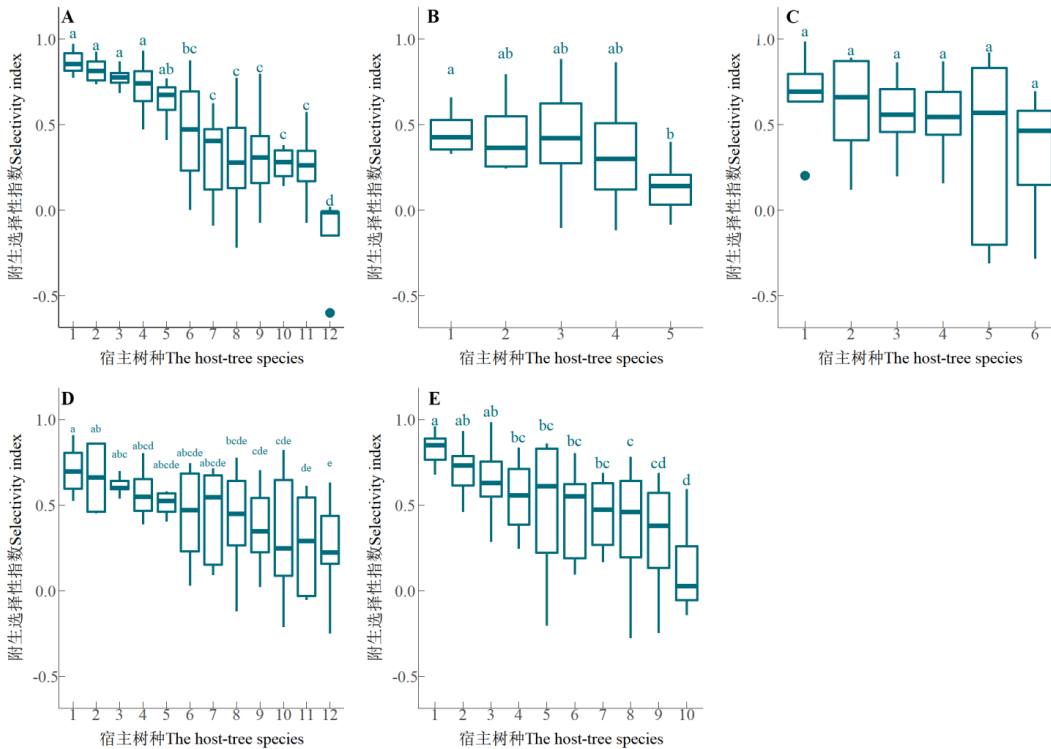
王艺宸, 邓芝燕, 张守信, 肖楚楚, 冯广, 龙文兴, 刘积史 (2022). 海南热带云雾林附生维管植物对宿主的选择性. 植物生态学报, 46, 405-415. DOI: 10.17521/cjpe.2021.0374

Wang YC, Deng ZY, Zhang SX, Xiao CC, Feng G, Long WX, Liu JS (2022). Host tree selection by vascular epiphytes in tropical cloud forest of Hainan island. *Chinese Journal of Plant Ecology*, 46, 405-415. DOI: 10.17521/cjpe.2021.0374

<http://www.plant-ecology.com/CN/10.17521/cjpe.2019.0155>

附录IV 霸王岭热带云雾林附生维管植物对宿主树种的选择性

Supplement IV Selectivity of epiphytic vascular species for host tree species in the tropical cloud forest of Bawangling



A, 琼崖石韦。1, 黄背青冈; 2, 平托桂; 3, 凹脉红淡比; 4, 碟斗青冈; 5, 大头茶; 6, 蚊母树; 7, 毛棉杜鹃; 8, 黄杞; 9, 赤楠; 10, 厚皮香八角; 11, 丛花山矾; 12, 九节。**B**, 阴石蕨。1, 赤楠; 2, 蚊母树; 3, 平托桂; 4, 毛棉杜鹃; 5, 黄杞; **C**, 镰翅羊耳蒜。1, 大头茶; 2, 碟斗青冈; 3, 厚皮香; 4, 毛棉杜鹃; 5, 蚊母树; 6, 赤楠; **D**, 蔓九节。1, 五列木; 2, 陆均松; 3, 碟斗青冈; 4, 平托桂; 5, 厚皮香; 6, 白花含笑; 7, 大头茶; 8, 赤楠; 9, 黄杞; 10, 光叶山矾; 11, 药用狗牙花; 12, 蚊母树; **E**, 流苏贝母兰。1, 黄背青冈; 2, 百日青; 3, 厚皮香; 4, 蚊母树; 5, 大头茶; 6, 平托桂; 7, 碟斗青冈; 8, 黄杞; 9, 双瓣木樨; 10, 赤楠。从矩形盒两端边各向外延伸一条线段, 直到不是异常值的最远点, 表示数据正常值的分布区间;

A, *Pyrrosia eberhardtii*. 1, *Cyclobalanopsis poilanei*; 2, *Cinnamomum tosi*; 3, *Cleyera incornuta*; 4, *Cyclobalanopsis disciformis*; 5, *Polyspora axillaris*; 6, *Distylium racemosum*; 7, *Rhododendron moulmianense*; 8, *Engelhardtia roxburghiana*; 9, *Syzygium buxifolium*; 10, *Illicium ternstroemioides*; 11, *Symplocos poilanei*; 12, *Psychotria asiatica*. **B**, *Davallia repens*. 1, *Syzygium buxifolium*; 2, *Distylium racemosum*; 3, *Cinnamomum tosi*; 4, *Rhododendron moulmianense*; 5, *Engelhardtia roxburghiana*. **C**, *Liparis bootanensis*. 1, *Polyspora axillaris*; 2, *Cyclobalanopsis disciformis*; 3, *Ternstroemia gymnanthera*; 4, *Rhododendron moulmianense*; 5, *Distylium racemosum*; 6, *Syzygium buxifolium*. **D**, *Psychotria serpens*. 1, *Pentaphragma eurypoides*; 2, *Dacrydium pectinatum*; 3, *Cyclobalanopsis disciformis*; 4, *Cinnamomum tosi*; 5, *Ternstroemia gymnanthera*; 6, *Michelia mediocris*; 7, *Polyspora axillaris*; 8, *Syzygium buxifolium*; 9, *Engelhardtia roxburghiana*; 10, *Symplocos lancifolia*; 11, *Tabernaemontana bovinia*; 12, *Distylium racemosum*. **E**, *Coelogyne fimbriata*. 1, *Cyclobalanopsis poilanei*; 2, *Podocarpus neriifolius*; 3, *Ternstroemia gymnanthera*; 4, *Distylium racemosum*; 5, *Polyspora axillaris*; 6, *Cinnamomum tosi*; 7, *Cyclobalanopsis disciformis*; 8, *Engelhardtia roxburghiana*; 9, *Osmanthus didymopetalus*; 10, *Syzygium buxifolium*. Vertical lines on boxplots indicate the distribution range of the normal value of the data.