

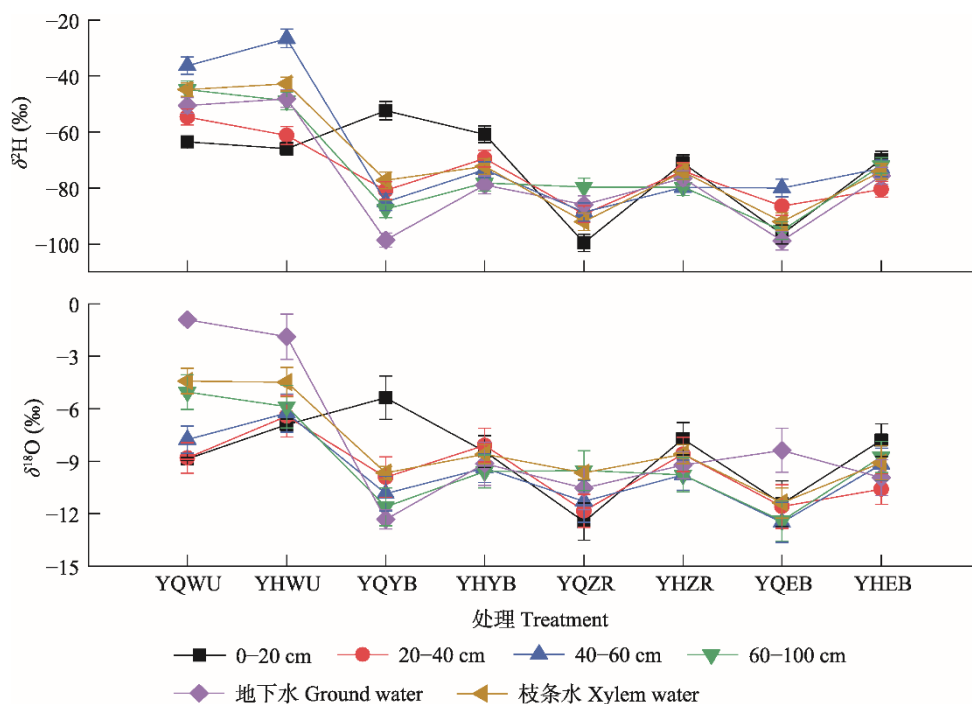
张潇, 武娟娟, 贾国栋, 雷自然, 张龙齐, 刘锐, 吕相融, 代远萌 (2023). 降水控制对侧柏液流变化特征及其水分来源的影响. 植物生态学报, 47, 1585-1599. DOI: 10.17521/cjpe.2022.0244

Zhang X, Wu JJ, Jia GD, Lei ZR, Zhang LQ, Liu R, Lü XR, Dai YM (2023). Effects of precipitation variations on characteristics of sap flow and water source of *Platycladus orientalis*. *Chinese Journal of Plant Ecology*, 47, 1585-1599. DOI: 10.17521/cjpe.2022.0244

<https://www.plant-ecology.com/CN/10.17521/cjpe.2022.0244>

附录II 北京山区侧柏人工林观测期间降雨前后不同水源同位素组成(平均值±标准误)

Supplement II Isotopic composition of different water sources before and after precipitation during the observation period of *Platycladus orientalis* plantation in Beijing mountainous area (mean ± SE)



YH, 降雨后; YQ, 降雨前。EB, 二倍降水; WU, 无降水; YB, 一半降水; ZR, 自然降水。

YH, after rainfall; YQ, before rainfall. EB, double precipitation; WU, no precipitation; YB, half precipitation; ZR, natural precipitation;