

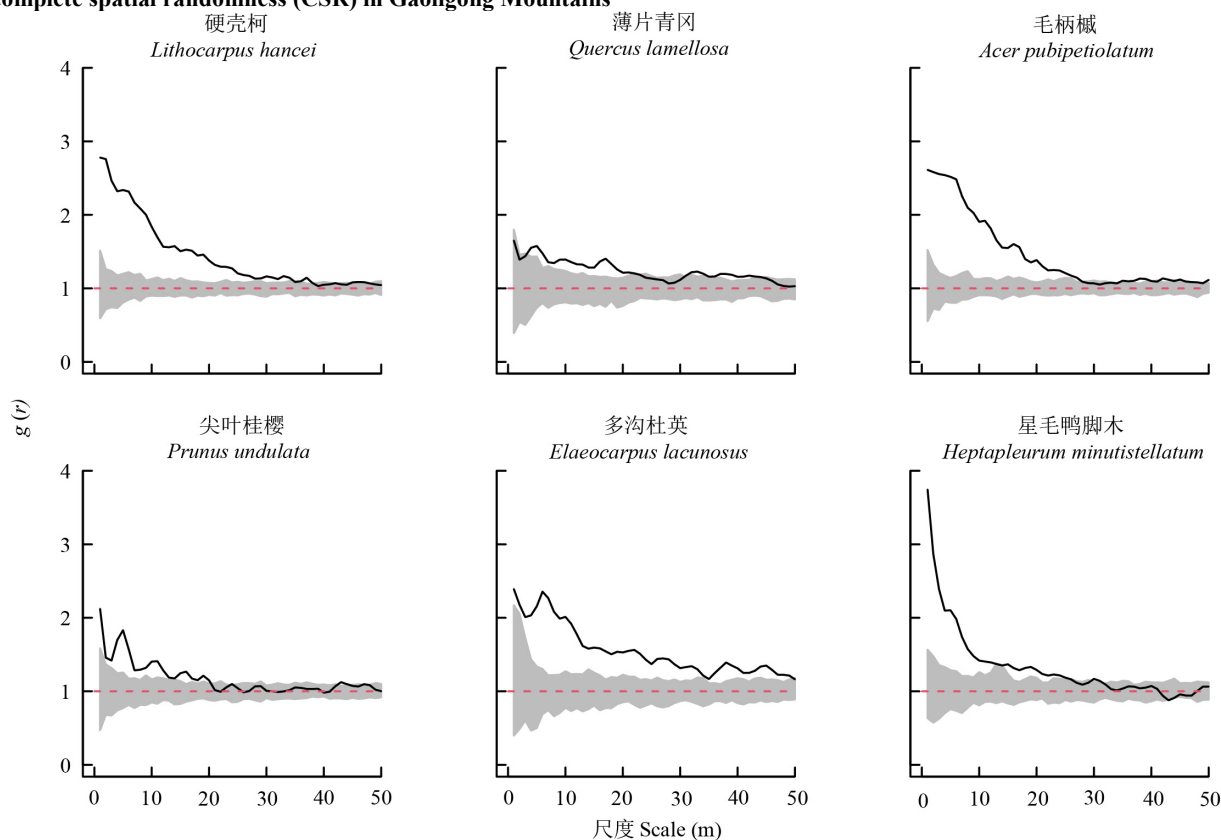
王丽萍, 乌俊杰, 柴勇, 李家华, 杨昌级, 赵士杰 (2024). 高黎贡山中山湿性常绿阔叶林优势种空间分布格局及其关联性. 植物生态学报, 48, 00-00. DOI: 10.17521/cjpe.2023.0209

Wang LP, Wu JJ, Chai Y, Li JH, Yang CJ, Zhao SJ (2024). Spatial patterns and associations of dominant species in a subtropical mid-mountain moist evergreen broadleaf forest in Gaoligong Mountains, Southwest China. *Chinese Journal of Plant Ecology*, 48, 00-00. DOI: 10.17521/cjpe.2023.0209

<http://www.plant-ecology.com/CN/10.17521/cjpe.2023.0209>

附录III 高黎贡山样地重要值前10的其他6个优势种在完全空间随机(CSR)零模型下的空间分布

Supplement III Spatial distribution of the other six dominant species of the top ten with important values under the null model of complete spatial randomness (CSR) in Gaoligong Mountains



实线表示成对相关函数 $g(r)$ 的函数值, 虚线表示成对相关函数 $g(r)$ 的期望值; 灰色阴影部分表示99%的置信区间。

Solid lines are the function value of the bivariate pair-correlation $g(r)$ function, dotted lines are the theoretical value of the $g(r)$ function; the gray shaded parts are 99% confidence interval.