

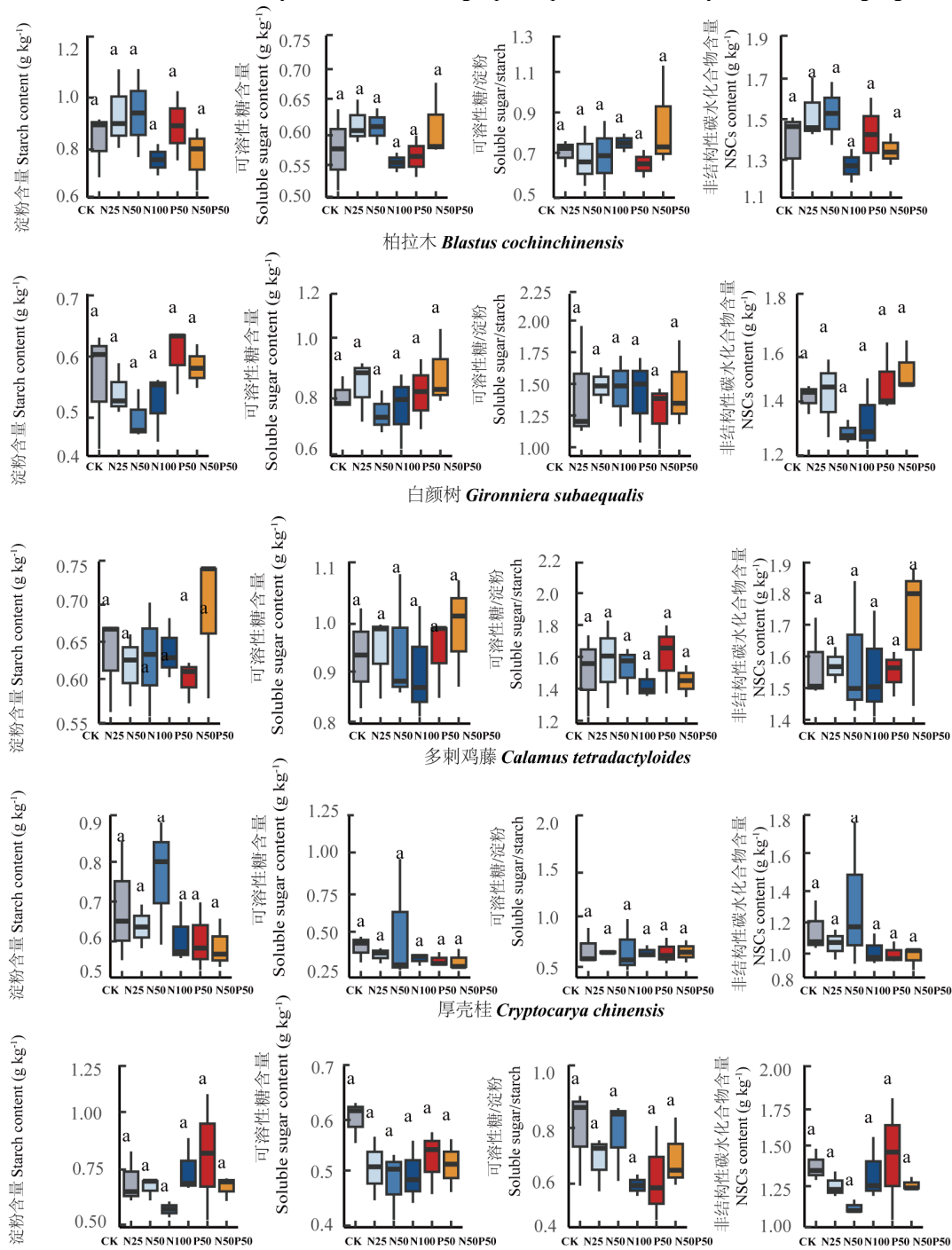
俞庆水, 倪晓凤, 吉成均, 朱江玲, 唐志尧, 方精云 (2024). 10年氮磷添加对海南尖峰岭热带雨林优势植物叶片非结构性碳水化合物的影响. 植物生态学报, 48, 690-700. DOI: 10.17521/cjpe.2023.0382

Yu QS, Ni XiaoF, Ji CJ, Zhu JL, Tang ZY, and Fang JY (2024). Effects of 10-year nitrogen and phosphorus additions on leaf non-structural carbohydrates of dominant plants in tropical rainforests in the Jianfengling, Hainan. *Chinese Journal of Plant Ecology*, 48, 690-700. DOI: 10.17521/cjpe.2023.0382

<http://www.plant-ecology.com/CN/10.17521/cjpe.2023.0382>

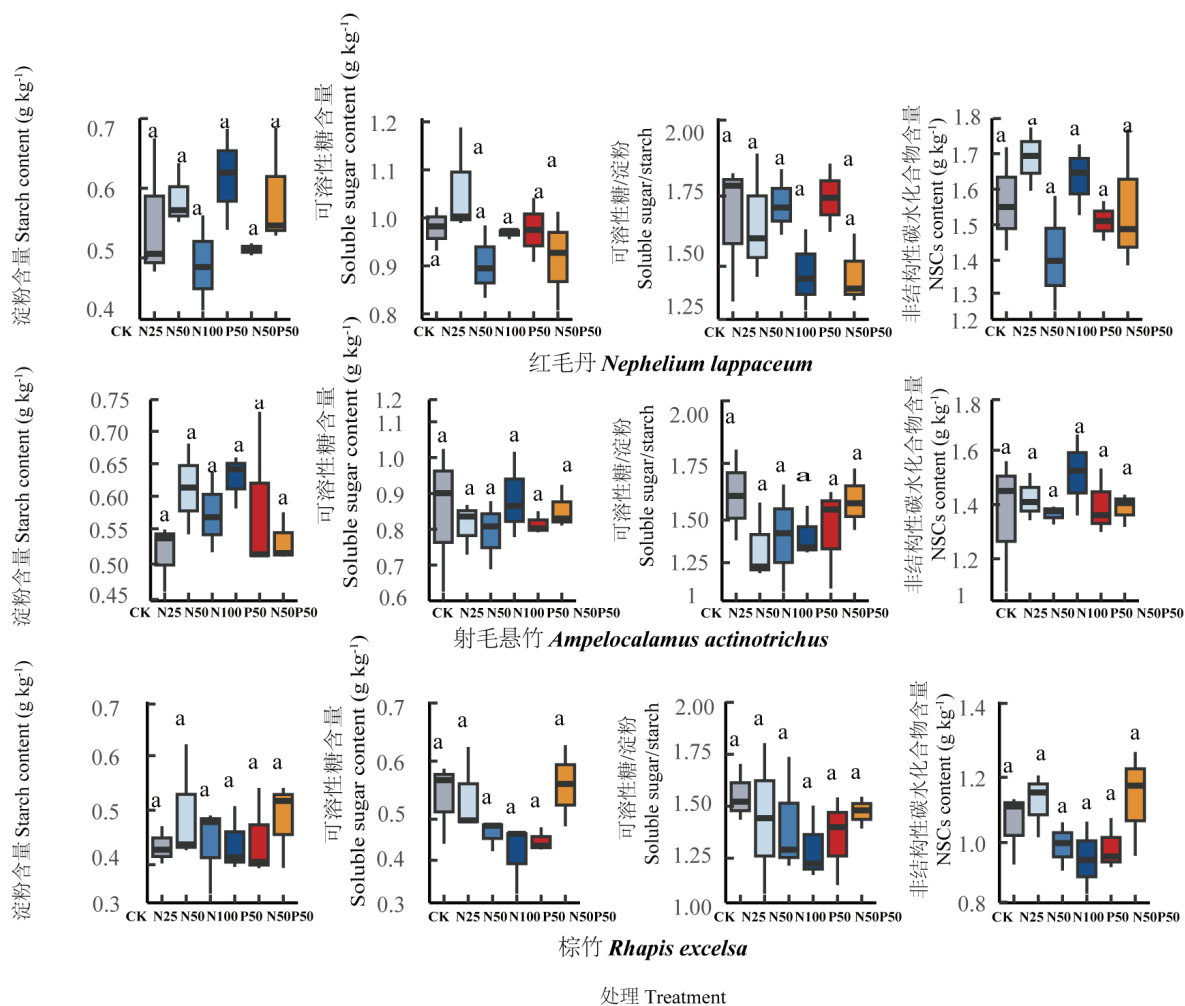
附录II 海南尖峰岭次生林8个植物物种叶片的非结构性碳水化合物含量

Supplement II Leaf non-structural carbohydrates contents of eight plant species in secondary forest in Jianfengling, Hainan



九节 *Psychotria asiatica*

处理 Treatment



不同小写字母表示不同处理间差异显著( $p < 0.05$ )。CK, 对照; N25, 氮添加( $25 \text{ kg} \cdot \text{hm}^{-2} \cdot \text{a}^{-1}$ ); N50, 氮添加( $50 \text{ kg} \cdot \text{hm}^{-2} \cdot \text{a}^{-1}$ ); N100, 氮添加( $100 \text{ kg} \cdot \text{hm}^{-2} \cdot \text{a}^{-1}$ ); N50P50, 氮( $50 \text{ kg} \cdot \text{hm}^{-2} \cdot \text{a}^{-1}$ )、磷( $50 \text{ kg} \cdot \text{hm}^{-2} \cdot \text{a}^{-1}$ )同时添加; P50, 磷添加( $50 \text{ kg} \cdot \text{hm}^{-2} \cdot \text{a}^{-1}$ )。

Different lowercase letters indicate significant differences ( $p < 0.05$ ). CK, control; N25, nitrogen addition ( $25 \text{ kg} \cdot \text{hm}^{-2} \cdot \text{a}^{-1}$ ); N50, nitrogen addition ( $50 \text{ kg} \cdot \text{hm}^{-2} \cdot \text{a}^{-1}$ ); N100, N addition ( $100 \text{ kg} \cdot \text{hm}^{-2} \cdot \text{a}^{-1}$ ); N50P50, nitrogen ( $50 \text{ kg} \cdot \text{hm}^{-2} \cdot \text{a}^{-1}$ ) and phosphorus ( $50 \text{ kg} \cdot \text{hm}^{-2} \cdot \text{a}^{-1}$ ) addition; P50, phosphorus addition ( $50 \text{ kg} \cdot \text{hm}^{-2} \cdot \text{a}^{-1}$ )。